

# Grand Southern Explorer - Superior

16 nights / 17 days

Starts in Victoria Falls, Zimbabwe/ Ends Vilanculous, Mozambique



**From US \$ 6230 per person**

P/Bag 0178, Maun, Botswana

Tel: +267 7231 1321 info@safarispecialists.net



Day	Location	Accommodation	Transfers / Activities	Meals
1	Victoria Falls Zimbabwe side	<b>Victoria Falls Safari Lodge</b> Waterhole Facing Room	Arrive Victoria Falls eta TBA, you are met and transferred to Victoria Falls Safari Lodge for afternoon at leisure or optional activities at own account	*selected dates have dinner included
2	Victoria Falls Zimbabwe side	<b>Victoria Falls Safari Lodge</b>	Day at leisure in Victoria Falls or optional activities at own account	B *
3	Chobe River area	<b>Muchenje Safari Lodge</b> Chalet	After breakfast, road transfer across the border into Botswana and onto Muchenje Safari Lodge, afternoon activity	B, L, D & SB
4	Chobe River area	<b>Muchenje Safari Lodge</b>	Morning and afternoon activity from a choice - Game drives in Chobe National Park, Chobe River Cruise, night drive and guided walks in Chobe Forest Reserve and possible village visit	B, L, D & SB
5	Private Kanana Concession, Okavango Delta	<b>Kanana Camp,</b> Traditional safari tents	Following breakfast and the morning activity (flight time permitting), road transfer to Kasane airport, followed by a light aircraft flight to the Okavango Delta and Kanana Camp for afternoon activity	B, L, D & SB
6	Okavango Delta	<b>Kanana Camp</b>	Morning and afternoon activity from a choice – day and night game drives, guided walks, mokoros & boating excursions	B, L, D & SB
7	Okavango Delta	<b>Kanana Camp</b>	Day of activities as above	B, L, D & SB
8	Johannesburg, South Africa	<b>African Rock Hotel</b> Standard room	Following breakfast and possible morning activity (flight time permitting), transfer by light aircraft to Maun Airport to connect to your flight to Johannesburg (not included). Upon arrival at Johannesburg Airport you are met and transferred to African Rock Hotel. Dinner for your own account	B

**Safari Specialists** – GRAND SOUTHERN EXPLORER – Superior - 16 nights

9	Sabi Sands Reserve, Kruger area	<b>Elephant Plains Game Lodge</b> Luxury room	Transfer to Johannesburg Airport for flight to Nelspruit or Hoedspruit (not included). Road transfer to Elephant Plains, afternoon activity	B, afternoon tea, D
10	Sabi Sands Reserve	<b>Elephant Plains Game Lodge</b>	Morning and afternoon activity from a choice - morning and afternoon/evening game drives and optional guided walk	B, L, D
11	Sabi Sands Reserve	<b>Elephant Plains Game Lodge</b>	Activities as above	B, L, D
12	Bazaruto Island, Mozambique	<b>Anantara Bazaruto Island Resort &amp; Spa</b> Beach Villa	Road transfer to Nelspruit for your flight via Johannesburg or direct to Vilanculos (not included). Upon arrival at Vilanculos you are met and transfer by boat to the resort.	B, L, D & SB
13	Bazaruto Island	<b>Anantara Bazaruto Island Resort &amp; Spa</b>	Scheduled daily snorkelling trip to Neptune's Nursery (weather permitting) and selected non-motorised water sport activities/ equipment are included. Any other activities are for your own account.	B, L, D & SB
14	Bazaruto Island	<b>Anantara Bazaruto</b>	As above	B, L, D & SB
15	Bazaruto Island	<b>Anantara Bazaruto</b>	As above	B, L, D & SB
16	Bazaruto Island	<b>Anantara Bazaruto</b>	As above	B, L, D & SB
17	Safari Ends	Ends Vilanculos Airport Mozambique	After breakfast boat transfer back to Vilanculos for onward travel arrangements.	B

B=breakfast / L=lunch / D=dinner / SB=selected beverages

## Highlights

- Victoria Falls, Zimbabwe side
- Chobe River cruise and Chobe National Park game drives
- Boating, Mokoro & walking excursions in the Okavango Delta
- Light aircraft transfers offering stunning birds eye views
- Game drives & guided walks in the Sabi Sands Reserve
- Water activities in Mozambique



## Cost of the safari 2016

Season	Cost per person sharing	Single supplement*	Average nightly rate per person
11 January – 29 Feb 2016 ** Substitute: Kwara Camp	US \$ 6230 per person	US \$ 300	US \$ 389 per person per night
March 2016	US \$ 6380 per person	US \$ 300	US \$ 399 per person per night
April 2016	US \$ 7100 per person	US \$ 770	US \$ 444 per person per night
May – June 2016	US \$ 7060 per person	US \$ 770	US \$ 441 per person per night
July & August 2016	US \$ 8070 per person	US \$ 1590	US \$ 505 per person per night
September & October 2016	US \$ 8120 per person	US \$ 1590	US \$ 508 per person per night
November 2016	US \$ 6920 per person	US \$ 400	US \$ 433 per person per night
01 – 26 December 2016	US \$ 6380 per person	US \$ 400	US \$ 399 per person per night
27-31 December 2016	US \$ 8050 per person	US \$ 400	US \$ 503 per person per night

**Please Note:**

- Kanana Camp is closed 6 January – 29 February 2016 inclusive and we have suggested Kwara Camp on the 5 Rivers special offer over these dates
- Long stay discount included at Anantara except 27 December – 05 January, contact us for honeymoon specials and value adds if applicable
- Victoria Falls Safari Lodge special offer from 11 January – 30 June 2016 - additional inclusions at no extra cost – 1 x Mukuwa Kuwa dinner, 1 x BOMA dinner, 1 x Vulture Culture lunch
- Single supplement is for accommodation only, applicable when travelling with more than 2 guests and excludes a flying surcharge for guests travelling solo – rate available on request
- Please note that where a booking crosses over 2 different rate periods e.g. Oct & Nov, neither rate is applicable – please request a special quote
- The above rate is subject to change due to major currency fluctuations, fuel surcharges and increases in National Park fees and availability.
- Subject to availability at the time of booking

**Botswana Park Fees and Departure Taxes - Increase**

Please be aware that the Botswana Park Fees and Airport Departure taxes may increase in 2016/2017. Regrettably such increases are beyond our control and are excluded from any bookings, provisional or confirmed. We will inform you should any increase be advised.

Inclusions	Exclusions
<ul style="list-style-type: none"> <li>• 2 nights <b>Victoria Falls Safari Lodge</b>, Victoria Falls, Zimbabwe includes breakfast only *except special offer 11 Jan – 30 June 2016 where additional meals are included and complimentary shuttle transfers to town</li> <li>• 2 nights <b>Muchenje Safari Lodge</b>, Chobe River area includes meals, selected beverages, laundry service, activities with corresponding current park fees – day and night game drives, guided walks, Chobe river cruise, village visit</li> <li>• 3 nights <b>Kwara Camp</b>, private Kwara Concession Okavango Delta includes all meals, selected beverages, laundry service, activities with concession fees – day and night game drives, guided walks, mokoro and boating on the Okavango Delta</li> <li>• 1 night at <b>African Rock Hotel</b>, Johannesburg includes breakfast</li> <li>• 3 nights at <b>Elephant Plains Game Lodge</b>, Sabi Sands/Kruger area, South Africa includes all meals and activities – game drives and guided bush walks</li> <li>• 5 nights <b>Anantara Resort &amp; Spa</b>, Bazaruto Island, Mozambique includes all meals, selected beverages, selected non motorised water sports and scheduled daily snorkelling trip to Neptune’s Nursery (weather permitting)</li> <li>• Road Transfers Victoria Falls Airport – Victoria Falls Safari Lodge – across the border into Botswana and Muchenje Lodge – Kasane airport</li> <li>• Light aircraft flights Kasane Airport – Kanana Camp (Kwara when applicable) – Maun Airport</li> <li>• Road Transfers Johannesburg Airport – African Rock Hotel – Johannesburg Airport</li> <li>• Road transfers Nelspruit Airport – Elephant Plains – Nelspruit Airport</li> <li>• Boat transfers: Vilanculos Airport – Anantara Resort – Vilanculos Airport</li> </ul>	<ul style="list-style-type: none"> <li>• <b>International/Regional Flights: Johannesburg – Victoria Falls Maun – Johannesburg Johannesburg – Nelspruit Nelspruit – Vilanculos (direct or indirect) Vilanculos – Johannesburg</b></li> <li>• Optional activities in Victoria Falls</li> <li>• Additional meals, any beverages at Victoria Falls Safari Lodge</li> <li>• Increases in National Park Fees for 2016 – package calculated on P70 per person per day entry fee in Chobe</li> <li>• Any activities, any additional meals, any beverages whilst at African Rock Hotel</li> <li>• Vehicle entry fees ZAR 250 per vehicle and ZAR 120 per person on road transfer into Elephant Plains</li> <li>• Any beverages whilst at Elephant Plains Game Lodge and Anantara Resort</li> <li>• Personal spending</li> <li>• All extras such as telephone calls/curio shopping/postage and so forth</li> <li>• International flights &amp; taxes</li> <li>• All Travel Insurances</li> <li>• Visas if required for Botswana, Zimbabwe and Mozambique, please check with your consulate or consultant ** Mozambique visas can no longer be obtained at the point of entry **</li> <li>• Any premium brand or imported beverages where drinks are included</li> <li>• Errors and Omissions</li> </ul>

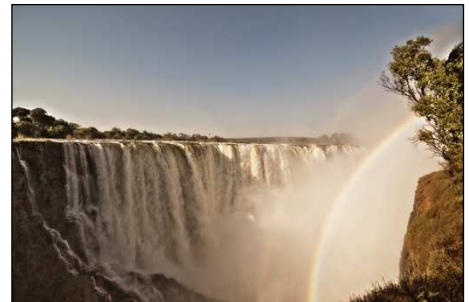
## Detailed Itinerary:

Days 1 & 2: VICTORIA FALLS SAFARI LODGE, Victoria Falls, Zimbabwe (bed and breakfast\*)

Travel time: Victoria Falls Airport – Victoria Falls Safari Lodge approx 20 minute drive

On arrival at Victoria Falls Airport, proceed through customs and immigration, where you are met in the arrivals hall by a local representative, and transferred to Victoria Falls Safari Lodge where you spend 2 nights on a bed and breakfast basis in a waterhole facing room. Your afternoon is at leisure, activities can be pre-booked on request. \* Additional meals included over special offer time 11 January – 30 June 2016.

Victoria Falls Safari Lodge is set high on a plateau which forms a natural boundary to the unfenced Zambezi National Park and is just four kilometers from the majestic Victoria Falls. An imaginative concept and impeccable standards have resulted in a successful and busy lodge.



This deluxe 72-roomed African Lodge prides itself on hospitality and first-class cuisine rivaled only by uninterrupted views and magnificent sunsets. Created with a keen eye for detail: hardwoods, thatch, vibrant colours – the effect is awe-inspiring. The lodge offers accommodation in luxurious rooms with private balconies and bathrooms, duplex-style suites with views overlooking the waterhole. Each bedroom has its own balcony, air-conditioning and modern bathroom. Facilities onsite include a Health & Beauty Spa, 24-hour room service, a library and television room. The lodge has been refurbished over the last few years, updating the atmosphere of the hotel and they have added a new wing called the Victoria Falls Safari Club and Suites (see separate description).

The hotel features two restaurants, the famous BOMA offering vibrant traditional entertainment and a wide variety of local and western foods including sensationally prepared game meat and even mopane worms for the brave! The alternative is the ala carte Makua Kuwa restaurant within the hotel, with views over the waterhole.

Victoria Falls Safari Lodge offers a complimentary shuttle bus to Victoria Falls Town at schedule times during the day. All activities are optional and can be pre-booked in advance or arranged direct with the hotel's booking desk or one of the many activity operators in town.

### AREA DESCRIPTION – VICTORIA FALLS

Victoria Falls town lies on the southern bank of the Zambezi River at the eastern end of the Victoria Falls. It is a lovely tourist town which is easy to explore on foot and which offers a wide range of activities from the challenge of white water rafting and bungi jumping, to the awe-inspiring elephant back safaris and sunset cruises. It has something for everyone

The Victoria Falls are one of the Seven Wonders of the World and is the largest sheet of falling water on earth - a spellbinding and mesmerizing spectacle. The sheer mass of water cascading down the 100m drop across nearly 2km makes a thunderous roar and creates a magnificent spray of water that can be seen for miles - hence the local name 'mosi oa tunya' meaning 'the smoke that thunders'.

Access to Victoria Falls is within easy walking distance from the town centre. Water flow over the falls varies throughout the year. The river's annual flood season is February to May when the spray can reach a height of over 400m, this is spectacular from above but it makes it very difficult to see the falls at ground level as it is under a heavy shower/mist. Water levels start dropping in August and are at their lowest October - December when much of the rocky face becomes dry. At times of low water, the falls are best viewed from the Zimbabwe side or from Livingstone Island.

**Days 3 & 4: MUCHENJE SAFARI LODGE, Chobe National Park area (fully inclusive)**

**Travel time: Victoria Falls Safari Lodge - Muchenje approx 2 hours road transfer**

After breakfast, at a pre-appointed time you are collected by a local representative for the transfer through Zimbabwe and Botswana immigration and customs (please have your passports at hand for border formalities) and onto Kasane Airport. This transfer can take up to 2 hours, depending on border formalities. At Kasane Airport you meet a Muchenje Safari Lodge representative and continue to transfer a further 45 minutes out to the lodge, where you stay for 2 nights on a fully inclusive basis.

Muchenje is an intimate and privately owned lodge situated at the western boundaries of the famous Chobe National Park. The lodge has stunning panoramic views overlooking the Chobe river and floodplains.



The lodge accommodates a maximum of twenty guests in spacious chalets overlooking the Chobe floodplains. Each en-suite room is exquisitely furnished with an African ambience and a private balcony affords stunning panoramic views. Guests may relax in the central lodge in the lounge, bar or lookout platform. The lodge also features a dining area, reception, curio shop, game viewing platform and library. The feature swimming pool is built amongst natural rock formations, taking advantage of the African vista. Activities offered at Muchenje Lodge are walking safaris in the Chobe Forest Reserve adjacent to Chobe National Park, which allows guests to explore the intricacies of the bush, plants, insects and big game. Game drives both in the reserve surrounding the lodge as well as into the Chobe National Park are conducted in open 4WD safari vehicles with qualified, professional guides. Alternatively guests experience game viewing by motorboat on the Chobe River past a bathing herd of elephants, hippos, crocodiles and amazing birdlife. For those on longer stays, fishing and interior drives to the remotest parts of central Chobe can be arranged with the lodge.

#### **AREA DESCRIPTION – CHOBE**

The Chobe River Front is a remarkable wildlife area due to the permanent water source of the Chobe River. However its accessibility from Kasane and neighbouring towns of Victoria Falls and Livingstone has created quite a busy tourist area with larger hotels and lodges than you find in the more remote Okavango Delta. The spectacle of all the animals coming to drink and frolic at the water's edge is one to behold, particularly in the dry season (May - Oct) where water is scarce away from the river. It is an area famous for its abundance of elephants, a variety of predators and, in addition, you are likely to see herds of buffalo and possibly even roan and sable antelope. In the rainy season (Nov - Apr) the game is much less concentrated at the river as the wildlife spread throughout the greater area of Chobe National Park due to availability of surface water from nearby pans. This assists the vegetation on the river banks in recovering from the massive herds that are attracted to the area in the dry months. The summer rains bring beautiful wild flowers, exquisite scenery, impressive bird life and an abundance of young animals usually born around November/December. The spectacular Chobe sunsets alone are worth a visit to the area. Please note that activities are restricted within the national park in accordance with government rules and regulations: these include no driving off-road, no walking and no driving after dark.

**Days 5, 6 & 7: KANANA CAMP, private Kanana Concession, Okavango Delta (Fully inclusive)**

**Travel time: Kasane - Kanana Approx 1hr 30 minutes air transfer with possible stops**

After breakfast and a possible morning activity (flight time permitting) you are transferred by road to Kasane airport for your light aircraft flight to Kanana Camp. Here you are booked for a 3 night stay in the south western Okavango Delta on a fully inclusive basis.

*Please note that the flight is booked on a 'seat rate' basis and therefore flight times are not scheduled until the day prior to flying, the lodge management will arrange your activities and transfers accordingly. Please note that there is a strict luggage restriction on all light aircraft flights of 15kg per person in soft bags, plus hand luggage.*

Kanana Camp is set in the south western delta amongst grass covered islands formed by fertile eroded termite hills dotted with fig, palm and jackal berry trees. The Kanana area encompasses a necklace of islands on the Xudum River, northeast of Pom Pom lagoon and is incredibly picturesque with winding waterways meandering through open lagoons.



This traditional camp has an intimate and personal atmosphere, built among spectacular shade trees of ebony, acacia and sausage tree. It offers eight large safari style tents equipped with tasteful furnishing and private en-suite bathrooms. The main lodge area is on raised decking encircling the trees and offers a dining and sitting area, a cocktail bar and a refreshing plunge pool.

Activities at Kanana include day and night game drives in open safari vehicles, game viewing on mokoro excursions, guided walks, fishing (seasonal), motor boating and sunset cruises. The waterways are lined with reeds and dotted with papyrus and tree islands in this picturesque and tranquil part of the delta, water levels vary throughout the year and therefore the focus of activities, the camp managers will advise guests on the best options during their stay. A wide variety of game frequent the islands around Kanana Camp, including impala, lechwe, leopard, lion and elephant and you may be lucky to see sitatunga whilst boating. Birding all year round is exceptional with regular sightings of Pels Fishing Owl amongst many others. Kanana Camp is one of the few camps in the Delta to have access to a private heronry where many migratory water birds come to nest from July onwards. Birds you will encounter at the heronry include marabou, yellow-bill and open-bill storks. The sight of thousands of nesting birds is mesmerizing and an experience you will not forget.

#### **AREA DESCRIPTION OF OKAVANGO DELTA**

The Okavango Delta is one of the world's largest inland deltas situated in the middle of the largest stretch of continuous sand in the world - the Kalahari basin. This oasis in the middle of the desert is a rich yet fragile ecosystem, providing a life source for an incredible variety of wildlife. A wealth of species have adapted to the contrasting conditions created by living in the harsh Kalahari desert which is transformed annually with the arrival of the delta flood waters originating in Angola.

The Okavango wetland encompasses Moremi Game Reserve and surrounding regions divided into areas known as Private Concessions. These concessions are wildlife management areas, carefully administered to balance the growing community's development and conservation, whilst empowering citizens through sustainable tourism. Many of the exclusive lodges in Botswana are situated within these concessions in the delta, providing an unparalleled wildlife experience - exclusive and remote, avoiding mass tourism and exploitation.

Flood levels fluctuate dramatically throughout the year, with high water levels peaking in the central Okavango during the dry winter months and water levels at their lowest during the later summer months, contrary to the seasonal rainfall. The landscape, activities and game viewing vary considerably throughout the delta depending on your location, the season and flood levels.

Some areas have larger tracts of permanent dry land which generally means there is more focus on land based activities (game drives) and big game viewing.

Lodges situated on islands deep in the delta concentrate more on water activities such as mokoro excursions, walking, boating, fishing and bird watching. Those lodges situated on the outer fringes of the delta, referred to as the 'seasonal' delta, offer varied experiences at different times of the year - more water based during high flood levels and more land based as the flood recedes.

Game is more concentrated around the permanent water during the dry season (Apr - Oct) with it becoming very hot in the later months. The heronries become active as the migrant birds return to Botswana from September through November, and general bird watching is excellent throughout the summer months. The rainy season (Nov - Apr) invigorates the lush scenery with wild flowers, dramatic thundershowers, spectacular sunsets and the birthing season brings great predator and prey interaction.

**Safari Specialists** – GRAND SOUTHERN EXPLORER – Superior - 16 nights

**Day 8: AFRICAN ROCK HOTEL, Johannesburg**  
South Africa (bed and breakfast)

**Travel Time: Kanana – Maun Airport**  
Approx: 20 minute air transfer  
**Maun – Johannesburg flight NOT INCLUDED**  
**Travel Time: Johannesburg Airport – African Rock Hotel**  
Approx: 20 min road transfer

After breakfast and a possible morning activity (flight times permitting), light aircraft flight transfer to Maun for your flight connection to Johannesburg. **\*\*Kindly note the flight to Johannesburg is not included\*\***

Once you arrive in Johannesburg you will be met by a representative from African Rock Hotel holding a board with your name printed on it and you will transfer to the guesthouse for your 1 night stay. Dinner is for your own account.

This boutique hotel is located 11 kilometres from the Johannesburg International Airport - O.R. Tambo, in the quiet suburb of Kempton Park away from the flight path of arriving and departing planes.



African Rock Hotel has 9 rooms that can accommodate 18 guests. A well established lush tropical garden, a swimming pool and large patio ensures relaxing outdoor living. The interior "look and feel" boasts a successful fusion of African, Western and Oriental design trends and offers a warm, welcoming and relaxing atmosphere. The Blue Hippo Restaurant at African Rock Hotel has a fusion cuisine, Western with an African touch & vice versa.

It has quick and easy high way access to Johannesburg, the Sandton area as well as Pretoria. The hotel has a shuttle service to the airport and other destinations, city and country tours booking office and wellness and beauty treatments.

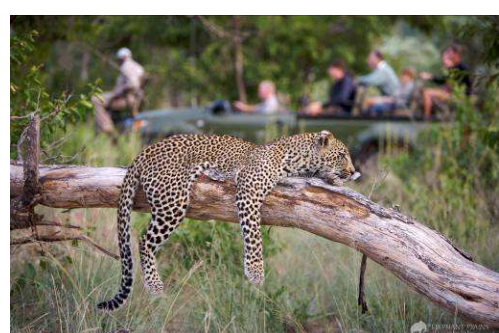
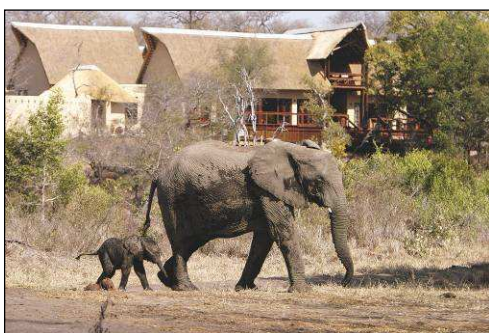
**Days 9, 10 & 11: ELEPHANT PLAINS GAME LODGE, Sabi Sands Reserve (full board and activities)**

**Johannesburg – Nelspruit flight NOT INCLUDED**  
**Travel Time: Nelspruit airport – Elephant Plains**  
Approx 3 hour road transfer

Following breakfast you are transferred back to Johannesburg Airport for your flight to Nelspruit. **\*\*Kindly note the flight to Nelspruit or Hoedspruit is not included. \*\***

Upon arrival at Nelspruit or Hoedspruit Airport you are met by a local representative and transferred by road to Elephant Plains Lodge. The transfer is approximately 3 hours, on main roads until you get to the Gowrie Gate where you enter a wildlife reserve. Here you are booked for 3 nights on a full board basis and activity basis.

Situated in the Sabi Sand Game Reserve, adjacent to the Kruger National Park, Elephant Plains Game Lodge offers comfortable style and affordable luxury. This family owned lodge accommodates a maximum of 24 guests, which ensures personal service and a warm, friendly atmosphere. The lodge is situated on the dry Manyeleti riverbed and overlooks a permanent waterhole.



## Safari Specialists – GRAND SOUTHERN EXPLORER – Superior - 16 nights

Accommodation is booked in the newer luxury chalets (pictured above). The luxury chalets are open-plan suites each with a lounge, double bedroom, en suite bathroom (inside/outside shower) and a private viewing deck that offers spectacular views over the riverbed. Decorated in natural earthy tones, they exude warmth and blend with the natural environment. All luxury chalets feature air-conditioning, overhead fans, fireplaces, mini bars, tea/coffee facilities, mosquito nets and electronic safes.

The rustic lounge area is shared by all guests and is an ideal place to relax and share experiences. Mealtimes are sumptuous affairs with tasty international cuisine and South African specialties accompanied by wines from a well stocked cellar. Breakfast and lunch are enjoyed in the dining room or on the deck. Dinner is served around a log fire in the boma, while enjoying the mystical nocturnal sounds under the African sky. Elephant Plains offers guests the African Health Spa for luxury treatments (own expense) and a small gym for those wishing to exercise during their stay.

Activities to be enjoyed are morning and afternoon game drives (returning after sunset with a chance to view nocturnal movements) as well as guided walks in the late morning. Activities are undertaken in the Sabi Sabi Private Reserve in conjunction with the regulations of the area and respect for the wildlife is inherent in the guides. On the guided bush walk you have the opportunity to take a closer look at animal tracks, birds, different types of grasses and trees, as well as any smaller details of the bush that might fascinate you.

### AREA DESCRIPTION - SABI SANDS

The Sabi Sand Reserve is the birthplace of sustainable wildlife tourism in Southern Africa, and is the oldest of all the private reserves in South Africa. It has only ever been a wilderness area and is home to a vast wildlife population, including The Big Five, and a number of endangered species too. Flanking the Kruger National Park, animals pass unhindered between the reserves.

The Sabi Sands is in particular well known for its amazing leopard sightings. The most elusive animal of the Big 5 is frequently spotted when going on a game drive in the reserve. As such, Sabi Sands offers the ultimate photographic safari one can think of. You can be certain to return home with some absolutely stunning pictures and memories. Besides the Big 5, other game species occurs in great numbers, among which are more than 300 bird species. Sabi Sands possibly makes the best South African safari destination for wildlife enthusiasts, photographers and bird watchers alike

Many of the land surfaces of what now is the Sabi Sands Game Reserve used to be agricultural land. As cattle farms occurred in the area, a reliable source of water was needed on the farms. To provide this water many boreholes were drilled providing a steady supply of water. After the establishment of Sabi Sands as a game reserve these waterholes and dams were kept intact and still function as water source. It is now not cattle that drink this water, but the many wild animals in the game reserve. As the waterholes provide an abundance of water throughout the year (and seasonal influences are not much of a factor) Sabi Sands proves to be a very popular place for large herds of animals. This to the enjoyment of travelers and large predators alike.

**Days 12 - 16: ANANTARA BAZARUTO ISLAND RESORT & SPA, Mozambique. (Full Board, selected drinks and non motorised water sports)**

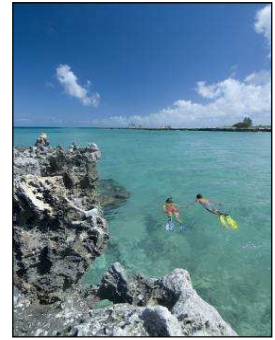
**Nelspruit – Johannesburg – Vilanculos flight NOT INCLUDED (direct twice a week)  
Travel time: Vilanculos – Anantara 50 min boat transfer**

Following an early morning start, you will be transferred to Nelspruit Airport for your flight via Johannesburg (or direct) to Vilanculos \*\* Kindly note the flights to Vilanculos – either direct or via Johannesburg are not included\*\*

Upon arrival at Vilanculos you are met and assisted with the onwards road & boat transfer to Bazaruto Island, where you will be accommodated at Anantara Bazaruto Island Resort & Spa for the following 5 nights in a Beach Villa. All meals are included during your stay as well as selected beverages, scheduled daily snorkeling trip to Neptune's Nursery (weather permitting), Mini-bar with soft drinks and beer, non-motorised water sport activities/equipment.

Anantara Bazaruto Island Resort and Spa is the idyllic tropical island paradise surrounded by palm trees, white sand and the turquoise waters of the Indian Ocean. Located on Bazaruto Island off the coast of Mozambique, this island resort is the perfect base from which to experience some of the world's best diving and fishing, indulge in an array of water sports, or simply relax.





Accommodation at Anantara offers understated luxury in the form of 29 Beach villas (pictured), 12 deluxe sea view pool villas, the beach pool villa, deluxe seaview pool villa and the Anantara pool villa. The elegant yet natural design of the villas makes the most of the superb location on the shores of unspoilt Bazaruto Island.

The Island Resort and Spa offers world-class luxury and facilities. Each villa offers complete luxury, with air-conditioning, mosquito screens, sumptuous en-suite bathrooms, mini-bars, 24-hour power, satellite TV and telephone access. Choices of separate, inter-leading and shared veranda villas are available.

The spectacular restaurants specializing in seafood, and charming bars with original walls dating back to the early Portuguese traders, provide the focus of Anantara's living areas. Nearby, the activity centre is the base for a host of Mozambique island-based activities, such as diving, fishing, snorkelling and water-skiing.

A state-of-the-art dive-training pool is available for guests wanting to hone their diving skills or take up one of several dive courses on offer. Those simply wanting to relax can laze around the beautiful swimming pools, drink cocktails (ask for a caiparinha!) at the wet bar, or while away time at the beach snack bar. And for ultimate hedonism, the ultra-luxurious new Sanctuary Spa offers a range of pampering treatments to revitalize the weariest of souls. If you need to check your emails, a refreshingly cool business centre is available.

#### AREA DESCRIPTION – BAZARUTO ARCHIPELAGO

The Bazaruto archipelago comprises Bazaruto, Benguerra and Magaruque Islands, as well as the smaller Island Santa Carolina, (previously known as Paradise Island). The archipelago, declared a National Park in 2000, sustains a diverse range of fauna and flora including forest, savannah and wetland ecosystems. Pestana Bazaruto Lodge is situated in the largest island of the Bazaruto Archipelago, approximately 800 km to the north of Maputo, the capital of Mozambique. The island of Bazaruto is undoubtedly a beautiful and unexplored destination, characterised by its wildlife, turquoise waters and idyllic beaches. Bazaruto Island is 35 Km in length and 7 km across at the widest point, and is a little piece of paradise! Part of the island is composed of enormous sand dunes, while the remainder of the island is thicket, grassland, scrub and wetland. Thick forests of casuarinas, coconut palms and cashew nut trees grow on its shores. Marine species include dolphins, dugongs, humpback whales, marine turtles and the freshwater lakes in the area are home to crocodiles. The impressive beauty of the coral reefs complements this subtropical ecosystem, enriched by the abundance and rare beauty of the tropical fish, clear water and excellent surf, plus rock and fly-fishing. The archipelago is deservedly known as the "Pearl of the Indian Ocean".

Day 17: END OF ARRANGEMENTS  
Vilanculos Airport

Travel time: Anantara Resort – Vilanculos  
Approx 50 min boat transfer

After breakfast, boat transfer back to Vilanculos for your onward travel arrangements.

## Special Notes

#### Shared Transfers and Activities

Road, boat, air transfers and activities are quoted on a seat basis (on a shared basis and NOT private) unless otherwise requested or specified. Private charters/transfers can however be requested at an additional cost. Passengers may have various stops en-route to a destination adding to the duration of the transfer. International flight connections are accounted for in the daily schedules.

On shared transfers all the flight times are arranged a day before travel to avoid endless schedule changes. The transfer or charter company reserves the right to specify departure and arrival times.

### **Weight and Luggage restrictions**

Please advise upon requesting a quotation where a traveller **weighs over 100kg**, as well as at time of confirming the booking, as it may be necessary to cost in an additional seat on internal flights for the passenger's safety and comfort.

Luggage is restricted on flight transfers to **20kg per person in soft bags**, which includes all hand luggage and camera equipment. Please refer to your itinerary notes, as in some instances, and in some countries, such as Zambia and Zimbabwe this limitation is decreased to 15kg per person. Please note that luggage in excess of the above restrictions shall result in additional costs for transport and/or storage and should be arranged in advance. Note that laundry can be done on a daily basis at most camps and lodges.

### **Health**

Please confirm that all Clients are medically fit, in good physical and mental health and that there is nothing which renders him/her unfit to undertake the tour at the time of booking. Any Client with a pre-existing medical condition or illness must declare the true nature of such conditions to the Company before the commencement of the tour. The Client is responsible for attending to any medical condition which he/she may have and must consult with his/her physician in respect of all medical conditions which might be affected by his/her participation in the tour, activities or associated activities.

The Client accepts that certain areas included in the tour are malaria-infected areas and that he/she should take reasonable anti-malaria precautions.

### **Insurance**

Travel, cancellation and health insurance are highly recommended for all Clients.

### **Visas/Passports/Travel Documents**

The Client is solely responsible to ensure that his/her passports, visas, insurance cover and vaccination certificates, (and any other travel documents and/or requirements of any nature whatsoever) are valid for the duration of the tour and in the countries to be visited.

### **Arrival and Departure Details**

It is imperative that we have the correct International/Regional arrival and departure details for the clients in order to plan the itinerary and ensure efficient onward transfers. Costs may be incurred if these details are not given on quotation, or if they change subsequently.

## **TERMS AND CONDITIONS**

We require that you have read and understood our full **SAFARI INFORMATION** and **TERMS AND CONDITIONS** before confirming the itinerary and commencing the safari. However we would like to highlight the following important notes.

### **EXCLUSION OF LIABILITY**

In terms of the trading conditions, and any contract(s) concluded pursuant hereto, the Company acts as a booking agent only, for and on behalf of the Client in procuring services. The Company utilizes the products of various travel Subcontractors. The Company does not provide any direct services to the Clients as its services are limited to procuring and compiling tour packages for its clients.

While the Company makes every effort:

- to engage quality Subcontractors among the airlines, hotels, tour operators and other service providers to constitute the itinerary of the tour; and
- to ensure that the various services that constitutes the tour package will be carried out efficiently and as advertised;

it does not have direct control over the provision of services by Subcontractors and shall not be liable for *inter alia* any loss, damage, injury, additional costs, delay or irregularity that may be occasioned by an error or default, act or omission of any Subcontractor in carrying out the logistics of the tour package, or associated activities.

### **Payment Terms**

Bookings must be confirmed in writing by fax, email and/or registered letter and the deposit payment must be received before the Company can confirm in full to all subcontractors. Once the deposit is received and the booking is confirmed, all terms and conditions apply and our cancellation policies will be in immediate effect.

By confirmation of the booking, the Client acknowledges that all terms and conditions of the Company have been provided and accepted.

## **Safari Specialists** – GRAND SOUTHERN EXPLORER – Superior - 16 nights

The full amount of the tour is payable not less than 60 days prior to the date when the tour commences. In the event that a booking is not paid in full as per the above payment terms the Company reserves the right to refuse the Client(s) participation in the tour, and the client will be liable for any applicable cancellation fees.

### **CANCELLATIONS**

All cancellations should be made in writing and will only be deemed effective upon acknowledgment of receipt by the Company.

Cancellations will be subject to the following penalties:

- 20% of the total booking fee shall be payable immediately upon confirmation.
- 50% of the total booking 45 - 90 days prior to commencement of the tour.
- 100% of the total booking 44 days or less prior to the commencement of the tour.

Standard Cancellation fees shall apply in instances of postponed departure dates.

### **RESERVATIONS**

Please be advised that for any quotes, no provisional bookings have been made unless otherwise specified by your consultant. Accommodation is subject to availability at the time of the booking.

Costs quoted are subject to change at any time due to *inter alia* excessive exchange fluctuations, fuel costs, taxes, levies, government regulations, rate of exchange, and factors that are imposed upon us by our suppliers and government that are beyond our control.

Provisional bookings will be held for a period of 12 days (unless otherwise advised), where after confirmation of the booking and payment of a 20% non-refundable deposit will be required to secure the booking, failing which the booking will be cancelled.

Clients are to advise the Company at the time of requesting a quotation, and of making a booking, of the ages of all children (under the age of 21 and as at the time of travel) that will be participating in the tour, together with their date of birth, as not all lodges accept children, and there may be restrictions or conditions applicable. Some properties will require that children under the age of 18 share with an adult.

It is recommended that optional additional activities should be requested at the time of requesting a quotation and/or making the booking, specifically in Livingstone or Victoria Falls e.g. sunset cruise, to guarantee availability of such activities.

All Clients should allow a minimum 2 - 3 hours connection time in Johannesburg for international flights. Please ask your consultant to check your flight details before booking.

With confirmation of the booking the Client accepts that the tour carries inherent risks, and that the Clients voluntarily assume all risks, which are associated with the tour. All Clients will be required to sign indemnities at the various camps/lodges/service providers, and abide by the Operators Code of Conduct in order to ensure their safety.

On confirmation of a booking, the Company requires personal information with respect to each and every Client e.g. Medical Conditions, Dietary requirements, Travel Insurance details and Emergency contact details. Please complete the Booking form on confirmation of a booking. By choosing not to complete and submit this information to the Company the Client will compromise the Company's response time in the event of an emergency.

With confirmation of the booking the Client confirms that he has read, understood and accepted the terms and conditions of the Company and its Subcontractors.